

# Trolley **for** medicine dispensing

> EVOLYS range



The EVOLYS range medicine trolley allows the daily dispensing of medicines with pill dispensers or personalised containers. PraticDose® gives you the **option of personalising your medicine trolleys** according to need using a wide range of containers and accessories.

## > the benefits

- Optimum usable volume for large capacity
- Light and robust structure for easy handling
- Materials resistant to corrosion and to disinfecting products
- Removable single-unit sliding door for easier cleaning
- 600 x 400 compatible
- Lockable by key or with electronic code
- 2 colour options: blue lagoon or raspberry

**Praticdose®**  
SOLUTIONS HOSPITALIERES



## > Technical features

- Overall dimensions (W x D x H in mm): 820 x 565 x 1046
- Uprights in anodised stainless aluminium, ABS covering panels with coloured body.
- Kydex work surface® (usable dimensions 649 x 471 mm) with raised boards, resistant to shocks, scratches and the main disinfecting products.
- Runners of 18 shelves with integrated anti-slip stops, in ABS, light grey.
- Closure with thermoformed single-unit door and locking with serial key, electronic code optional.
- Series fitted with a guide handle, 4 standard rails for hanging accessories and 2 fixtures at the rear of the trolley (e.g. computer holder, gantry).
- 4 swivelling wheels ø 125 mm including 2 with brakes, grey polyamide cover, non-stain tread.
- Bumper: 4 rounded buffers on outside of the trolley, non stain with shock absorbers.

Designation	Dimensions W x D x H (mm)	Internal capacity in number of shelves	Lagoon	Raspberry
Evolys 600 x 400 trolley 18 shelves	820 x 565 x 1 046	18	8F4018BL	8F4018FR
Evolys 600 x 400 trolley 18 shelves code lock	820 x 565 x 1 046	18	8F4018BL-CODE	8F4018FR-CODE

## > Examples of layouts

Model shown: medicine dispensing trolley (18 shelves) fitted with the following elements

### Internal layout

- 2 levels of personalised shelf containers on removable aluminium shelves
- 3 x 600 x 400 trays of 10 daily modules from the MODULO® range
- 1 x 600 x 400 ABS CONTAINER with 115 mm height
- 1 x 600 x 400 ABS CONTAINER with 195 mm height

### Equipment-Accessories

- 1 wire basket
- 1 refuse sack holder double
- 1 sharps disposal bin holder



### Principle of internal layout

The inside of the trolley can be fitted with the different internal elements (600 x 400 ABS containers, shelf containers, 600 x 400 tray for daily modules, etc.) shown on the following page. These elements come in sizes in multiples of 40 mm allowing optimum use of the usable volume of 18 shelves (see table on following page)



Dispensing trolley fitted with sloping writing board



Dispensing trolley fitted with gantry with 2 standard rails equipped with 5 tipping containers, 3 pouring containers and a glove box holder



Dispensing trolley fitted with removable extension tray



Dispensing trolley fitted with name-based containers, 600 x 400 containers and a telescopic holder for treatment files

## > Internal layout elements

Ref.	Designation	Height in mm	Number of shelves	System kits identification	Identification compartment
<b>1</b>	<b>600 x 400 ABS container with double stop container</b>				For handle of the anti-slip ABS
8AU075	ABS container 75	75	2	Contact us	Label cover
8AU115	ABS container 115	115	3		White labels
8AU195	ABS container 195	195	5		(pack of 20): 8AT069

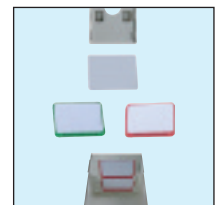


1

Ref.	Designation	Dimensions W x D x H in mm	Number of shelves	Removable sliders (shelf containers)	Identification system
<b>2</b>	<b>Shelf containers for use on aluminium shelf or as subcontainer* for ABS containers</b>				
	<b>Width 1/6</b>			Reference	For aluminium shelf container handle
8AB070_1-6	Shelf container 70 1/6*	90 x 370 x 70	2	8AC070-1/6	Label cover 1/6
8AB110_1-6	Shelf container 110 1/6*	90 x 370 x 110	3	8AC110-1/6	8AB069-1/6 +
8AB150_1-6	Shelf container 150 1/6*	90 x 370 x 150	4	8AC150-1/6	White labels
	<b>Width 1/3</b>				(pack of 20): 8AB068-1/6
8AB070_1-3	Shelf container 70 1/3*	185 x 370 x 70	2	8AC070-1/3	Label cover 1/3
8AB110_1-3	Shelf container 110 1/3*	185 x 370 x 110	3	8AC110-1/3	8AB069-1/3 +
8AB150_1-3	Shelf container 150 1/3	185 x 370 x 150	4	8AC150-1/3	White labels
8AB230_1-3	Shelf container 230 1/3	185 x 370 x 230	6	8AC230-1/3	(pack of 20): 8AB068-1/3

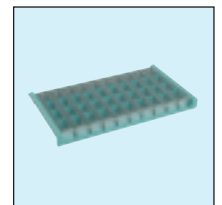


2



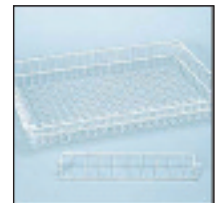
3

Ref.	Designation	Dimensions W x H in mm
<b>3</b>	<b>Identification system for compartment kit dividers or shelf container sliders</b>	
8A010	Label case (pack of 20) for 2 label holders	59 x 45
8A004	Label holder (pack of 10 sheets of 20)	54 x 40
8A005	White label (pack of 30 sheets of 20)	51 x 40
8A006	Red label (pack of 30 sheets of 20)	51 x 40
8A007	Green label (pack of 30 sheets of 20)	51 x 40



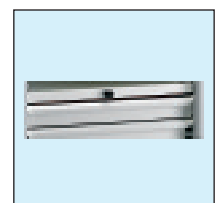
4

Ref.	Designation	Dimensions W x D x H in mm	Number of shelves
<b>4</b>	<b>Trays and daily modules* (see MODULO range)</b>		
8AP000	600 x 400 tray for 10 daily modules	600 x 400 x 50	2
52140	MODULO module blue*	55 x 300 x 40	-
52240	MODULO module raspberry*		
8AU060	600 x 400 tray for 60 goblets	600 x 400 x 75	2



5

Ref.	Designation	Dimensions W x D x H in mm	Number of shelves	Dividers width 400 removable
<b>5</b>	<b>Wire baskets 600 x 400 with anti-slip stop</b>			Reference
8AF075	Wire basket H75	600 x 400 x 75	2	8AF076
8AF115	Wire basket H115	600 x 400 x 115	3	8AF116
8AF195	Wire basket H195	600 x 400 x 195	5	8AF196



6

Ref.	Designation	Number of shelves
<b>6</b>	<b>Other elements</b>	
8A011	Aluminium shelf for shelf containers	-
8A020	Lockable shelf	1
8A017	Telescopic shelf	1
<b>7</b>	<b>Treatment file holder</b>	
8A016	Telescopic holder for hanging files (A4 format)	7
8A018	Removable casket for files that are hanging or rigid on holder telescopic (usable dimensions W 470 x D 360 x H 285 mm)	8
8A018-T	Option, pair of rails for casket with hanging files	-
8A018-C	Option, removable dividers for casket with rigid files (batch of 9)	-



7

## > Equipment-Accessories

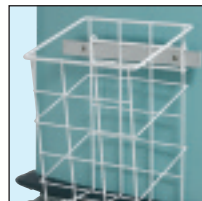
Ref.	Designation	Dimensions W x D x H (mm)
1	8F024 Removable and pull-down extension shelf	
2	28039 All-purpose sharps disposal bin holder	
3	28071N Refuse sack holder single (15/20 l)	235 x 180 x 360
4	28072N Refuse sack holder double (15/20 l)	510 x 180 x 365
5	28074N Refuse sack holder (25 l) with lid and pedal	235 x 190 x 400
6	28062N Small wire basket	365 x 175 x 240
	28061N Large wire basket	405 x 175 x 240
7	28063N Storage box	455 x 135 x 110
8	28091N Document case (hanging A4 files)	320 x 235 x 370
9	28011N 3-place document sorter	150 x 250 x 450
10	28195 Water fountain with goblets	
11	28038 Bottle holders (for work surface or storage box)	
12	28045 A3 sloping writing board	
13	Portable PC holder on articulated arm (see computer range file - contact us)	
14	8F004 Aluminium 2 rail standard gantry 8A013 Gantry shelf	
15	Tipping containers for gantry: 28004N 4 tipping containers 28005N 5 tipping containers 28006N 6 tipping containers	
16	Pouring containers for gantry: 28002N 2 x 4 l pouring containers with holder 28003N 3 x 1 l pouring containers with holder	154 x 240 x 125 105 x 165 x 85
17	28007N 4 gantry saline hooks	
18	23431 1 l soap holder	
19	28422 Transfusion stand with 4 hooks 28001N Standard glove box holder	



1 - Removable extension shelf (8F024)



2 - Sharps disposal bin holder (28039)



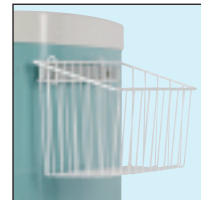
3 - Refuse sack holder single (28071N)



4 - Refuse sack holder double (28072N)



5 - Refuse sack holder with lid and pedal (28074N)



6 - Wire basket (28061N and 28062N)



7 - Storage box (28063N)



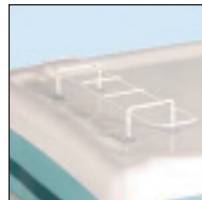
8 - Document case (28091N)



9 - Document sorter (28011N)



10 - Water fountain (28195)



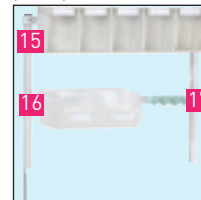
11 - Bottle holder (28038)



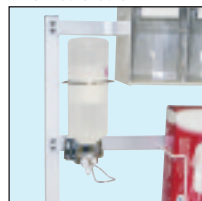
12 - Sloping writing board (28045)



13 - Portable PC holder on articulated arm (28011N)



14 - Gantry (8F004)



18 - SHA holder (23431)



19 - Transfusion stand with 4 hooks (28422)

PraticDose® > ANALYSE - ADVISE - SUPPORT

315, rue Charles Sève - B.P. 29  
69651 Villefranche-sur-Saône cedex - France  
Telephone: +33 (0) 4 74 09 05 96  
Fax: +33 (0) 4 74 09 05 98  
www.praticdose.fr - praticdose@praticdose.fr

**Praticdose®**  
SOLUTIONS HOSPITALIERES